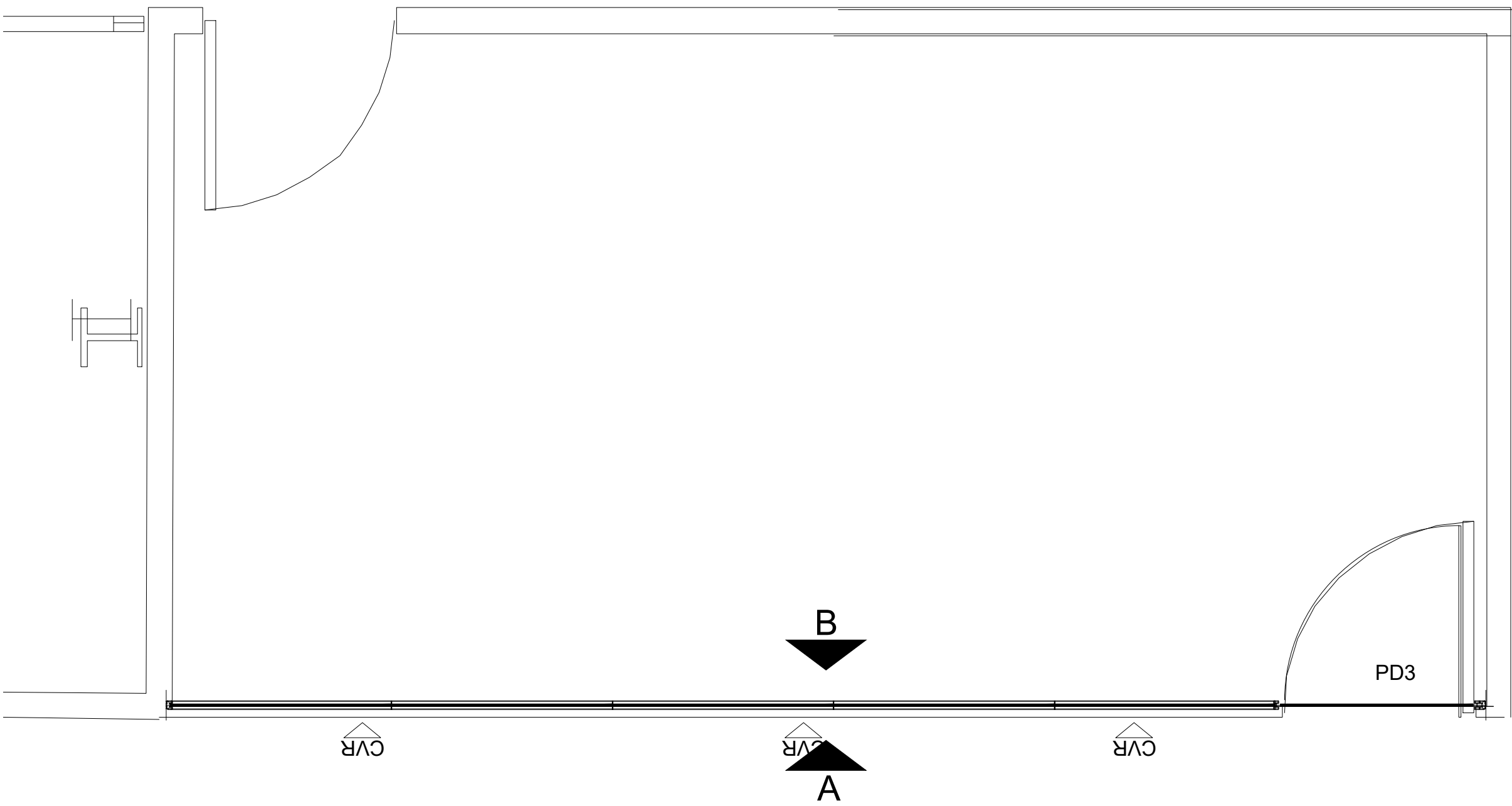
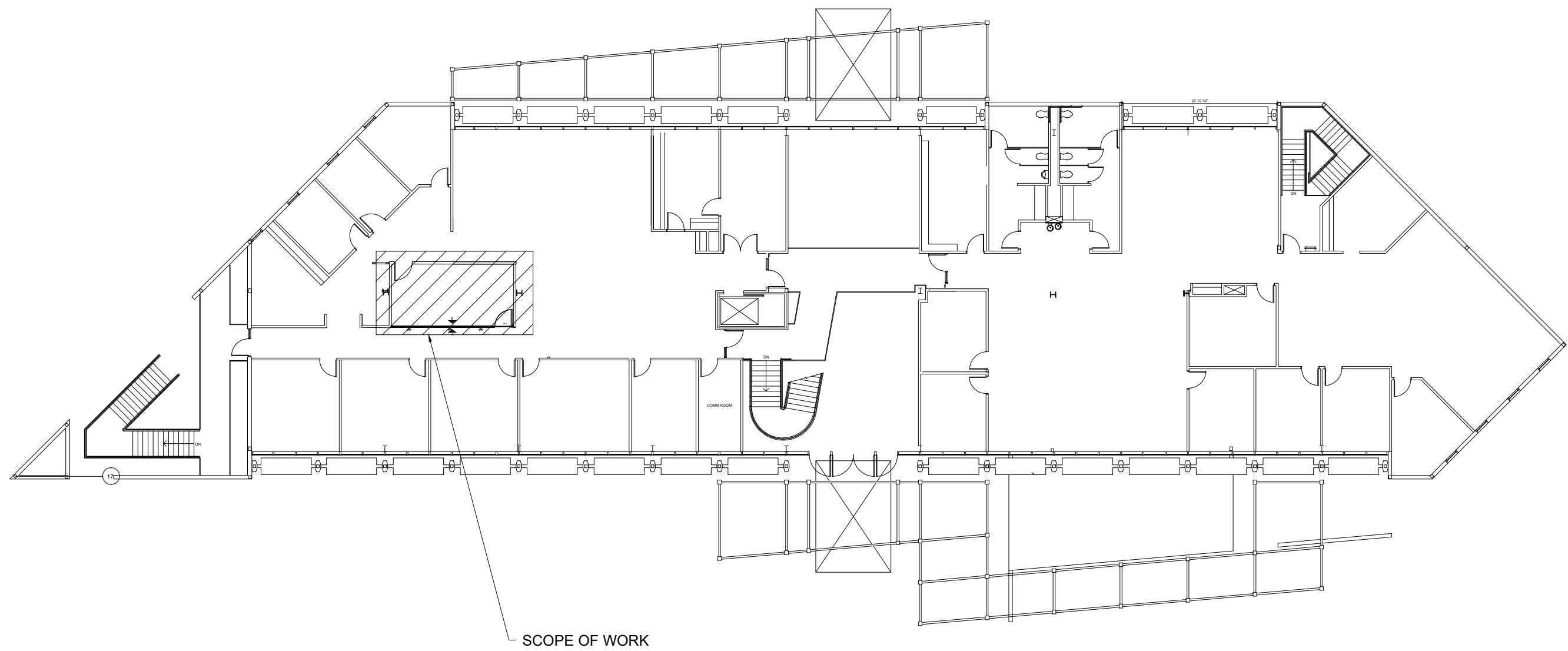


This drawing is the confidential and proprietary information of DIRT Environmental Solutions Ltd. ("DIRTT"). Any reproduction, alteration, disclosure or use of this drawing other than as agreed to by DIRT Environmental Solutions Ltd. ("DIRTT") is expressly prohibited. Do not use drawings for other purposes. All dimensions, including, but not limited to, dimensions, drawings, details, and specifications contained herein must be verified by the contractor and any discrepancies must be reported to DIRT Environmental Solutions Ltd. ("DIRTT") in writing before proceeding with work. Do not place of drawing package for full disclosure.



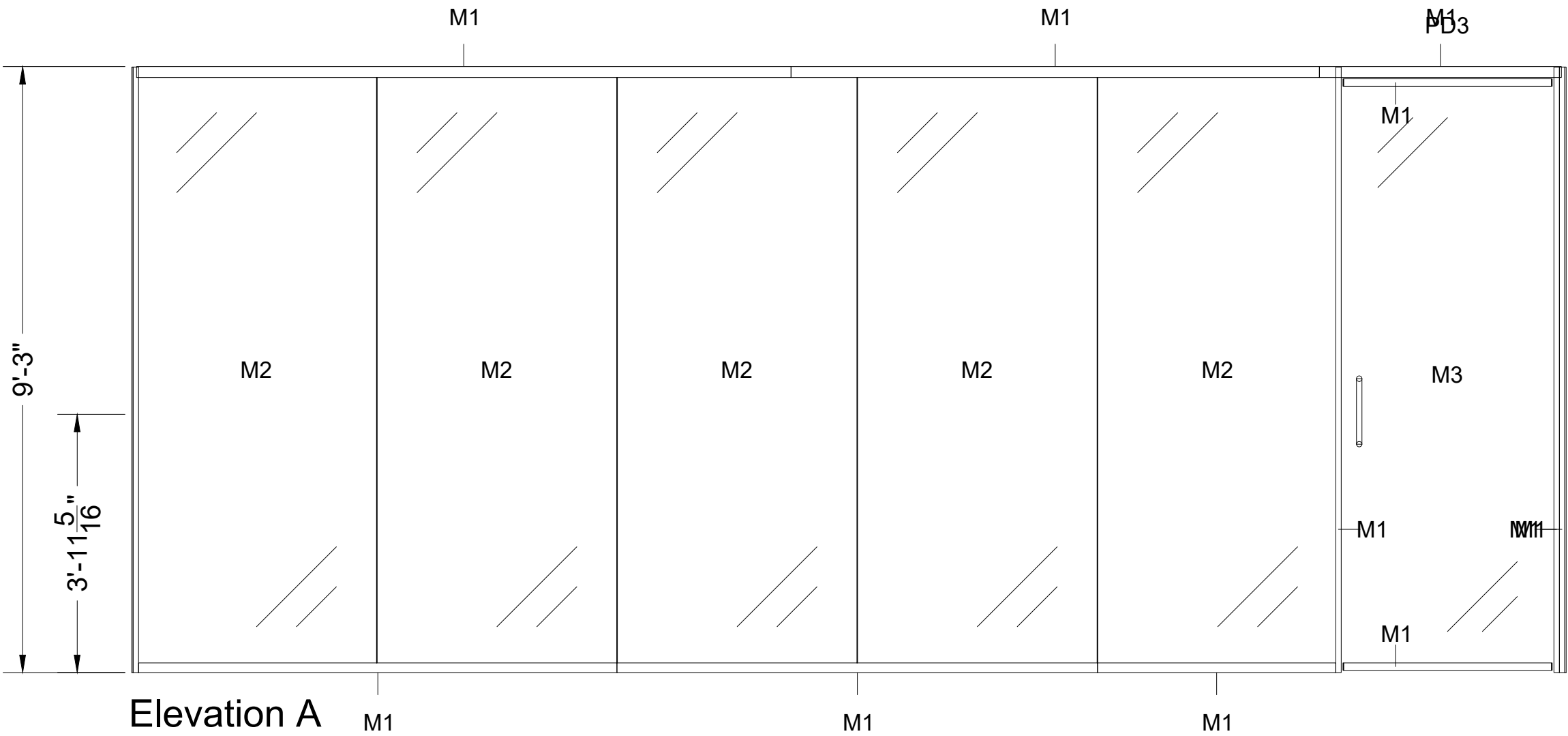
1 FLOOR PLAN
DW-101
SCALE: 1/2"=1'-0"



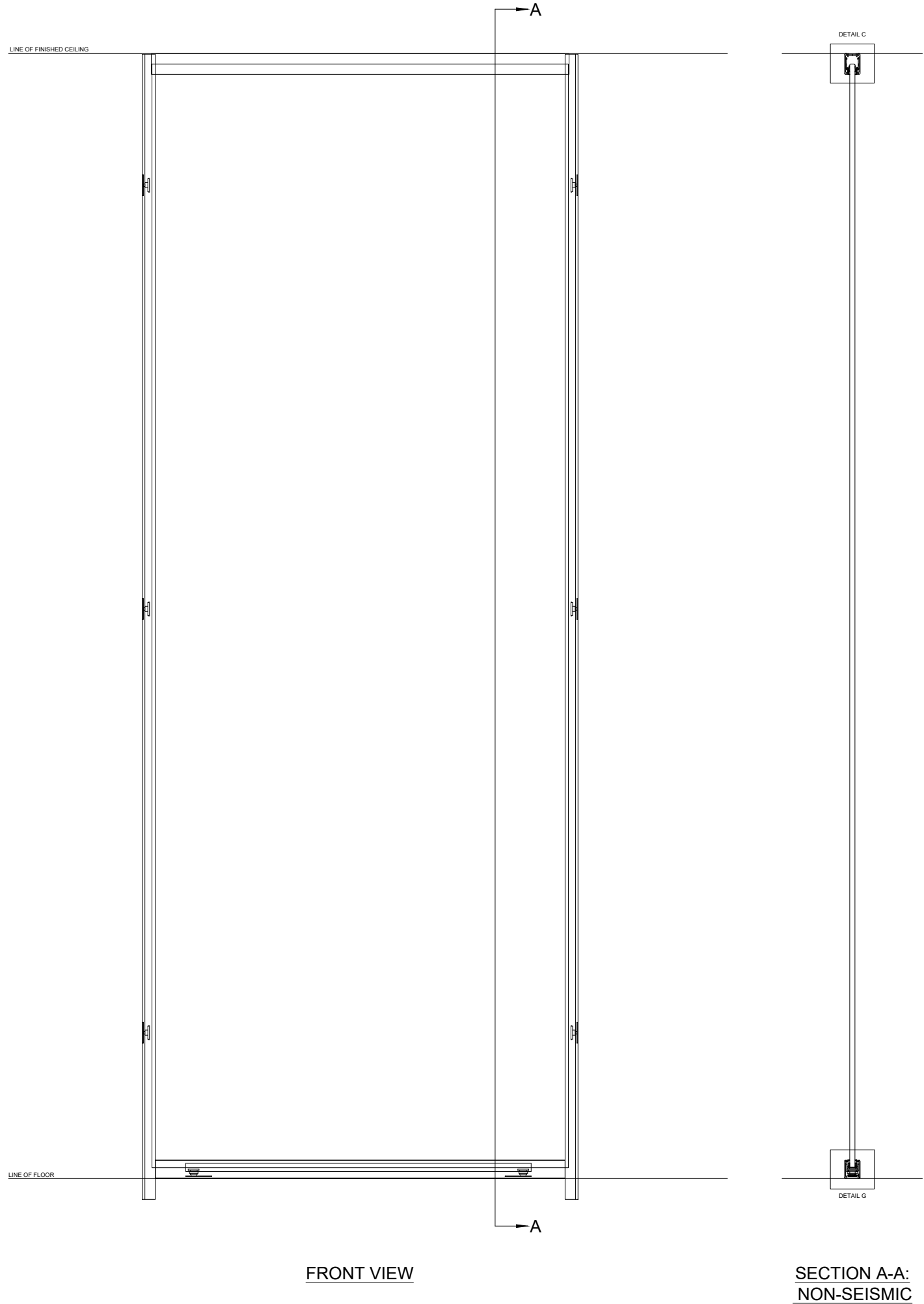
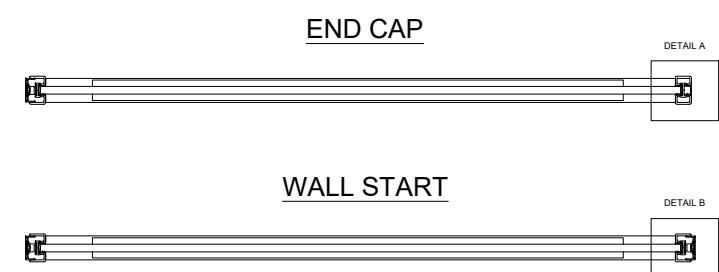
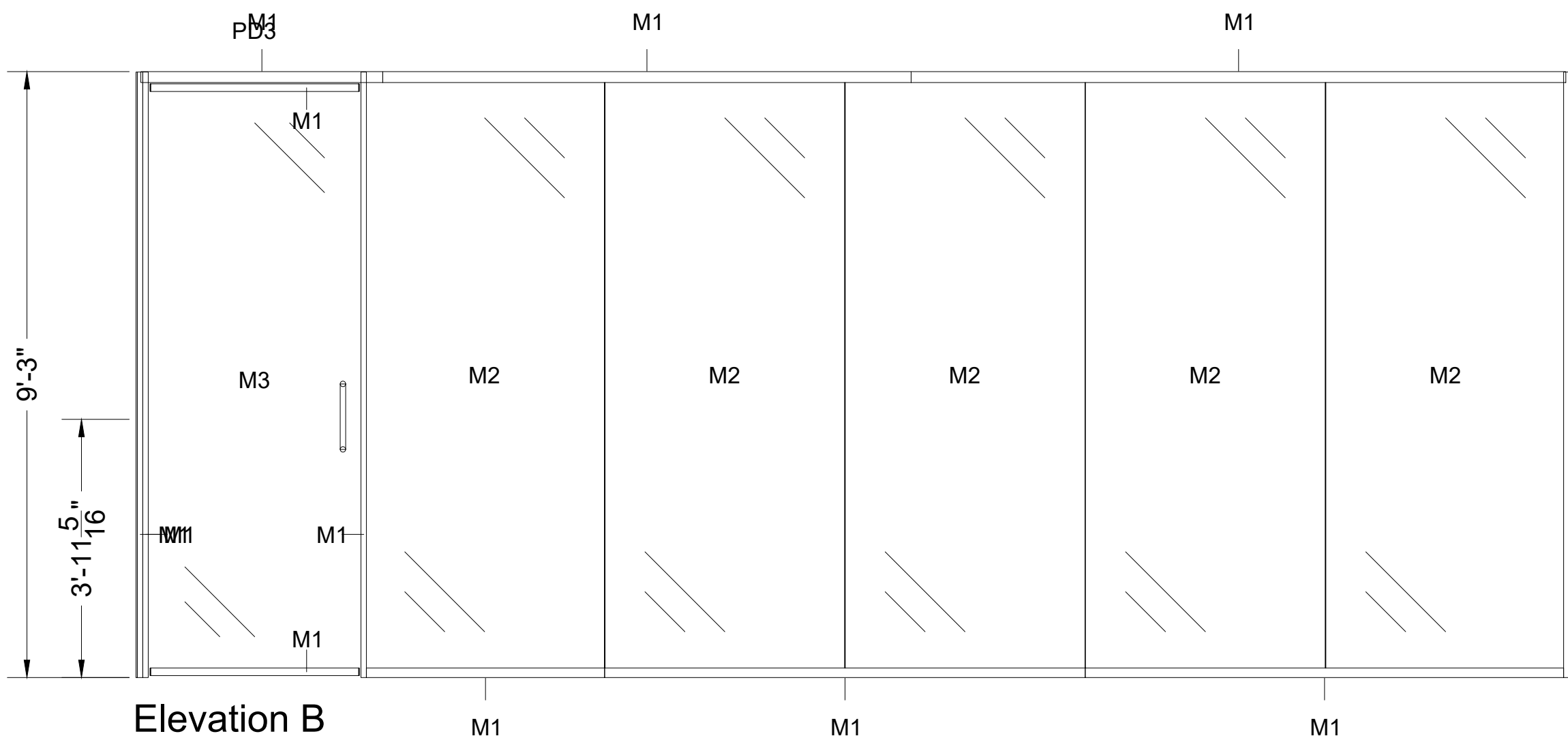
2 KEY PLAN
DW-101
Scale: NTS

DIRTT Finish Schedule	
Finish	Specification
M1	ANO Grade 1 Anodized, Anodized Finish - Clear
M2	GLS COM GLASS DIRECT TO SITE - COM Glass Title: Default 12mm; COM Glass: Flat Polish All Edges; 12.0; 12.0mm
M3	GLS COM GLASS DIRECT TO SITE - Default 12mm; COM Glass: Flat Polish All Edges; 12.0; 12.0mm
M4	PWD DIRTT Powder Coated Grade 2; Powder Coat - Shimmer DPM50 (Metallic)
M5	ANO Grade 1 - Anodized; Anodized Finish - Clear

DIRTT Door Schedule										
Style Name	Size	Handedness	Hardware Type	Closer Type	Stopper	Door Base Style	Finish Tag	Hardware Description	Center Location AFF	Door Track Type
PD3 Reflect_Mini-rail_Pivot_Door_with_Framed_Opening	Height 8' - 10 7/8" X Width 3' - 2 3/8"	RH	None	None	N/A	N/A	M3, M4, M1	12" D-Pull 630 Finish	12" D-Pull 630 Finish(3" - 11 1/4")	N/A



3 ELEVATIONS
DW-101
SCALE: 1/2"=1'-0"



A REFLECT END CAP
SCALE: NTS

B REFLECT WALL START
SCALE: NTS

C REFLECT HEADER TOP (NON-SEISMIC)
SCALE: NTS

G REFLECT ABOVE FLOOR BASE (NON-SEISMIC)
SCALE: NTS

4 DETAILS
DW-101
SCALE: NTS

PROJECT DETAILS/NOTES:

FRAME AND TRIM DETAILS

EXTRUSION PROFILE: REFLECT

☐ CURVILINEAR

☐ RECTILINEAR

☐ BLADE

☐ EVIL TWIN

BASE TRIM COLOR:

☒ SILVER

☐ CHARCOAL

☐ BLACK

REVEAL:

☐ CLASSIC

☐ END

FLOOR, CEILING, AND SEISMIC DETAILS

FLOOR TYPE:

☒ CARPET

☐ HARD SURFACE

CEILING TYPE: UNKNOWN

☐ DRYWALL BREAKHEAD

☐ CORNICE RAIL

☐ LOW WALL

☐ GRID

SEISMIC REQUIRED:

☒ NO

☐ YES

DOORS:

REFERENCE: REFERENCE DOOR SCHEDULE FOR FURTHER DETAILS

ELECTRICAL PROVISION REQUIRED: N/A

DATA PROVISION REQUIRED: N/A

MILLWORK PROVISIONS REQUIRED: N/A

ADDITIONAL NOTES:

FRAME FINISH:

☒ ANODIZED ALUMINUM

☐ POWDER-COATED

☐ VENEER

PVC/GLASS WIRE COLOR:

☒ SILVER

☐ CHARCOAL

☐ BLACK

CORPLANAR:

☒ NO

☐ YES

WALL HEIGHT: 9' 3"

GRID TYPE:

☐ RHP

☐ 1516"

TILE TYPE:

☐ FLUSH

☐ CONCEALED

☐ REGULAR

HARDWARE REQUIREMENTS:



a Division of Commercial Design Services, Inc.

TAMPA

5805 BARRY ROAD

TAMPA, FLORIDA 33634

JACKSONVILLE

8172 BAYMEADOWS WAY WEST

JACKSONVILLE, FLORIDA 32256

ORLANDO

2405 LUCIEN WAY

MAITLAND, FLORIDA 32751

TALLAHASSEE

508-C CAPITAL CIRCLE SE

TALLAHASSEE, FLORIDA 32301

TELEPHONE +1 (813)546-0431

www.shiftinteriors.com

FL LIC. # 1826000948

DISCLAIMER

This drawing represents DIRTT Environmental Solution Ltd.'s ("DIRTT") interpretation of the design intent and serves as DIRTT's shop drawings for manufacturing purposes. The details and scope of these shop drawings represent the product that will be produced by DIRTT and delivered to site. Any additions or changes to, or deletions or deviations from, these drawings will be regarded as a change order and processed accordingly. Manufacturing will not commence without approval of these shop drawings.

You agree to immediately notify DIRTT of any discrepancies between the on-site dimensions and ceiling heights and those contained in the approved drawings. Upon notification, DIRTT shall take all reasonable steps to make the necessary changes, but shall not be responsible for any additional costs or schedule delays associated with such changes.

You agree to provide a sample of all contractor-supplied hardware to DIRTT within one week of approval of shop drawings. Wherever possible, actual samples of hardware are to be provided to DIRTT. DIRTT shall not be responsible for any additional costs or schedule delays associated with changes in hardware specifications.

THESE DRAWINGS ARE THE CONFIDENTIAL AND PROPRIETARY INFORMATION OF DIRTT ENVIRONMENTAL SOLUTIONS LTD. ANY REPRODUCTION, ALTERATION, DISCLOSURE OR USE OF THIS DRAWING OTHER THAN AS AGREED TO BY DIRTT ENVIRONMENTAL SOLUTIONS LTD. IS EXPRESSLY PROHIBITED.

CLIENT APPROVAL

- ☐ APPROVED DRAWING PACKAGE
- ☐ APPROVED, AS NOTED
- ☐ REVISED, RESUBMIT

Authorized Signing Officer

Date

This drawing represents DIRTT Environmental Solutions ("DIRTT") interpretation of the design intent and serves as our shop drawings for manufacturing purposes. The details and scope in these drawings represent the product that will be produced by DIRTT and delivered to site. All additions, changes, or deviations from this approval drawing package will be regarded as a change order and processed accordingly. Approval of this drawing package is one of the conditions precedent to commencement of manufacturing.

DIRTT Environmental Solutions

DRAWING INDEX

DW-101 PLANS, ELEVATIONS, SCHEDULES
DETAILS

Project Name:

Florida Municipal Power
Agency (FMPA)
2nd Floor, Room 201

Project Address:

8553 Commodity Circle
Orlando, FL
32819

PRELIM
SHOPS

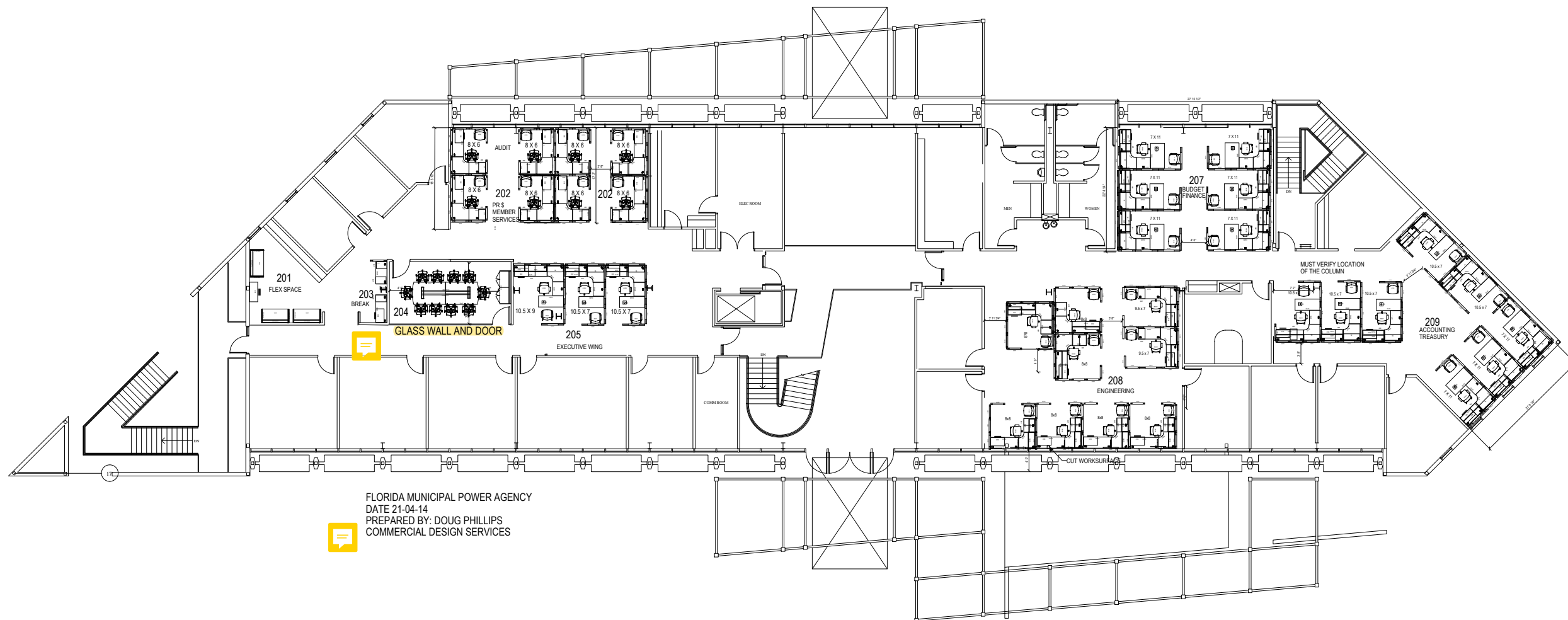
Rev Date Revision Initial

- 18JUN21 Prelim Shops First Issue ---

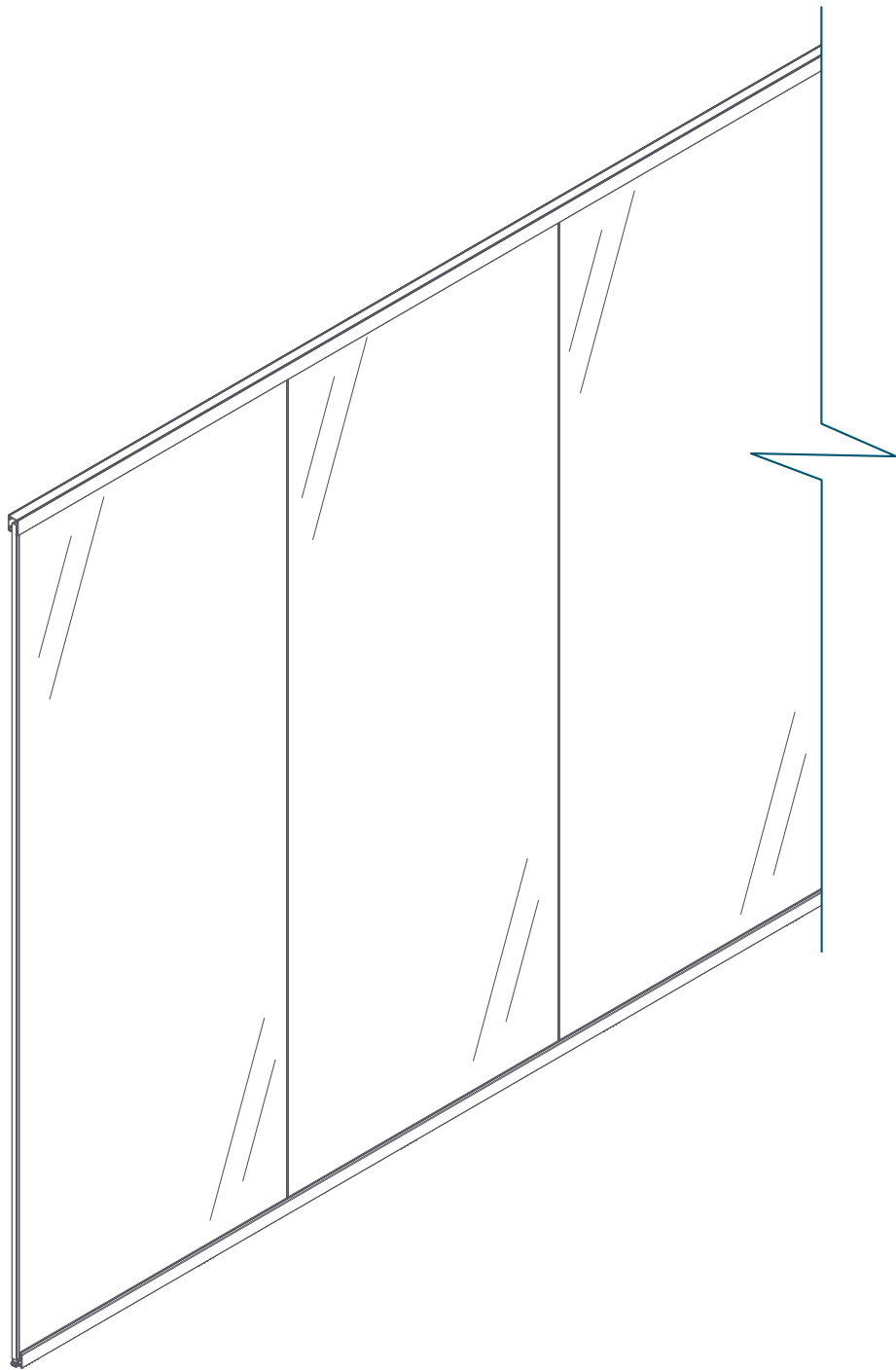
Project: ----
Drawn by: ----
Scale: AS NOTED
Plot Date: 2021/06/18
Contact: ----
Contact Number: ----

SHOP DRAWINGS
SHEET

DW-101



TECH SHEET
REFLECT™ WALL



COMPONENTS AND MATERIALS

ALUMINUM EXTRUSIONS

Header, Base, Base Cover and Vertical Extrusions

Architectural Grade and Structural Aluminum Alloys

Glass Channel

Milled Finish

Aluminum Finish Options

Clear Anodized (5 micron standard)

Powder Coated

Custom as required, see www.dirtt.com for standard DIRT color options

STEEL COMPONENTS

Cinching Hardware

Levelers

Wall Start Levelers

Carpet Grippers

GLASS PANELS

Clear Tempered Glass $\frac{3}{8}$ " (10mm) or $\frac{1}{2}$ " (12mm)

Starphire Glass $\frac{3}{8}$ " (10mm) or $\frac{1}{2}$ " (12mm)

Customer's Own Material (COM) Laminated Glass $\frac{3}{8}$ " (10mm) or $\frac{1}{2}$ " (12mm)

PVC COMPONENTS

Header Rail Fin Seal (located in header) and

Vertical Glass Wipe (located in verticals)

Rigid/Flex Co-extrusion

Black/Silver

Base Glass Channel Wipe (located in base rail and cover)

Rigid PVC

Black/Silver

Base Rail Fin Seal (located in base rail and cover)

Rigid/Flex Co-extrusion

Black/Silver

Glass Retainer (located in header rail)

Rigid PVC

Black

DRY JOINT TO GLASS CONNECTIONS

Clear Polycarbonate Bow Tie for $\frac{3}{8}$ " (10mm) Glass or $\frac{1}{2}$ " (12mm) Glass

TAPES

Ricochet Tape (for top of glass)

Clear

Foam Tape (for header rail and wall start to base building)

Gray

3M Double-Sided High Density Foam Tape (for base rail to smooth flooring)

White

3M 4905 Double-Sided VHB Tape (for bow tie between glass panels)

Clear

WALL CONNECTION COMPONENTS

Base Building Connections

Wall Start with Wall Start Leveler Assembly

Reflect Wall with Seismic_TECH SHEET_v2-0 - 05Jan2021

DIMENSIONS AND DETAILS

ALUMINUM EXTRUSIONS

Header Rail

Minimum (Min.) Length 3" (76mm)

Maximum (Max.) Length 120" (3.05m)*

Width 1 $\frac{1}{2}$ " (38mm)

Height 2" (50mm)

Base Rail with Cover

Min. Length 15 $\frac{1}{2}$ " (394mm)

Max. Length 120" (3.05m)*

Width 1 $\frac{1}{2}$ " (38mm)

Height 1 $\frac{3}{4}$ " (44mm)

Glass Wall Verticals

Width 1 $\frac{3}{4}$ " (44mm)

Height Oversized in height; cut down on-site to suit opening

Max. Height 120" (3.05m)

Depth 1" (25mm)

***NOTE:** Multiple rails can be cinched together for longer lengths.

GLASS PANELS

NOTE: The following glass panel dimensions apply to $\frac{3}{8}$ " (10mm) and $\frac{1}{2}$ " (12mm) unless otherwise noted.

Standard Glass Panel Width 48" (1.22m)

Min. Glass Panel Width 13 $\frac{1}{2}$ " (343mm)

Max. Glass Panel Width 60" (1.52m)

Max. Height

$\frac{3}{8}$ " (10mm) Glass 108" (2.74m)

$\frac{1}{2}$ " (12mm) Glass 120" (3.05m)

TAPES

Ricochet Tape (for top of glass) $\frac{1}{2}$ " (13mm) wide(w) x 0.02" thick(t)

Foam Tape (for header rail and wall start) $\frac{1}{4}$ " (6mm) w x $\frac{1}{4}$ " (6mm) t

Double-sided Foam Tape (for base rail to floor) 1" (25mm) w x $\frac{1}{8}$ " (3mm) t

3M 4905 Double-Sided VHB Tape

(for bow tie between glass panels) $\frac{1}{4}$ " (6mm) w x 0.5mm t

LEVELERS

Leveler Adjustment - Seismic and Non-seismic

Up $\frac{1}{4}$ " (6mm)

Down $\frac{1}{4}$ " (6mm)

Wall Start Leveler Adjustment

In $\frac{1}{4}$ " (6mm)

Out $\frac{1}{4}$ " (6mm)

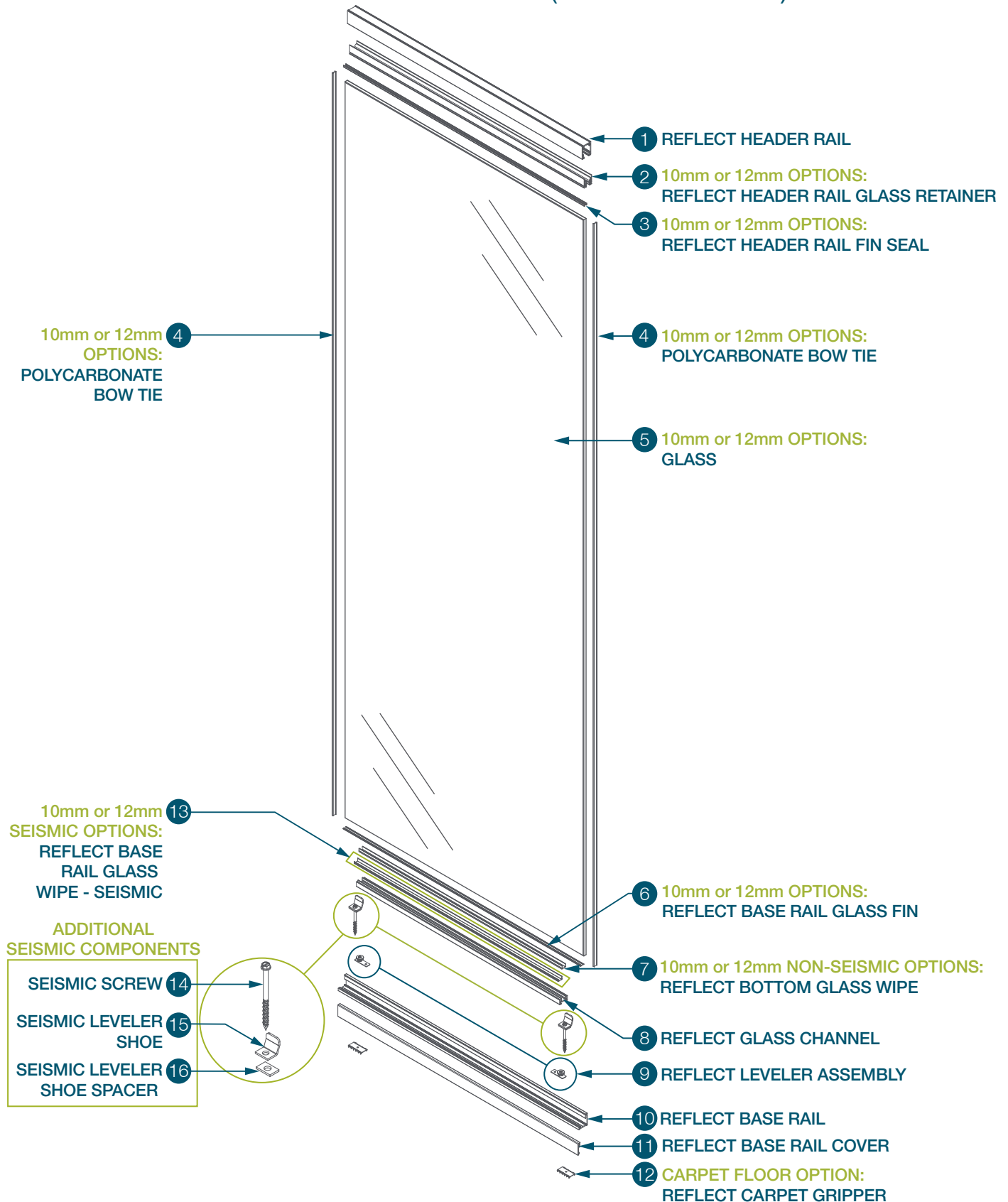
OTHER WALL CONNECTION OPTIONS

Reflect Glass/Wall Verticals

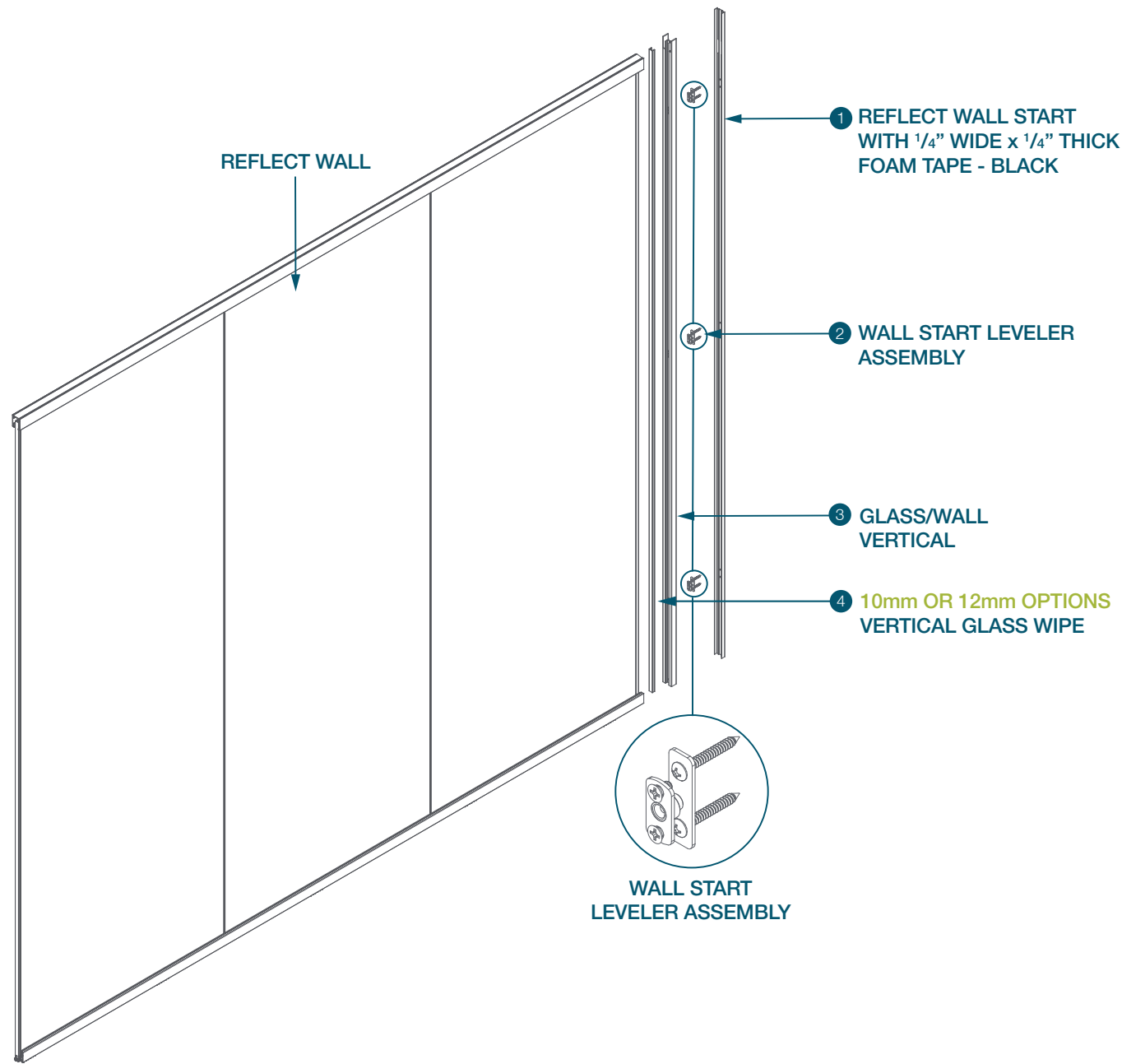
Reflect 3-way Corners

Reflect 90° Corners

REFLECT WALL WITH SEISMIC (EXPLODED VIEW)



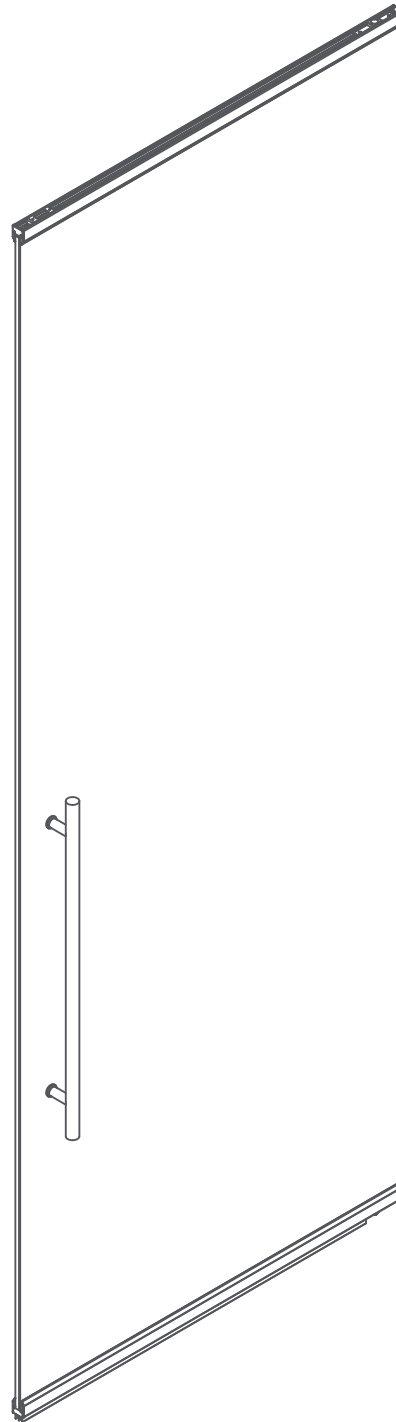
REFLECT WALL START
(EXPLODED VIEW)



TECH SHEET

REFLECT™ MINI-RAIL PIVOT DOOR WITH FRAMED AND FRAMELESS OPENING

build better™
DIRTT



COMPONENTS AND MATERIALS

ALUMINUM EXTRUSIONS

Pivot and Strike Verticals, Rail Filler with Port and Pivot Door Mini-rail
Architectural Grade and Structural Aluminum Alloys
Aluminum Finish Options

Clear Anodized (5 micron standard)

Powder Coated

Custom as required (see www.dirtt.com for standard DIRT T color options)

Glass Clamps

Clear/Black Anodized

GLASS

Standard Clear Tempered Glass ½" (12mm)*

Approved Custom Finishes

*NOTE: Indicates items to be sourced locally by DIRT T Partner (DP).

PVC COMPONENTS

Pin Head Seal (located in both verticals) (optional)

Flex PVC

Clear

Astragal Carrier (located in verticals)

Rigid PVC

Silver/Black

Door Filler Retainer (located in header)

Rigid PVC

Black

Floor Sweep (located on door)

Rigid/Flex Co-extrusion

Black

PVC Seal for Frameless Opening (for door and glass edge)

Rigid/Flex Co-extrusion

Clear

TAPES

Ricochet Tape (for top of glass)

Clear

Open-cell Foam Tape (for header rail and wall start to base building)

Black

OTHER COMPONENTS

Fuzzy Astragal (located in verticals - optional and header)

Plastic

Silver/Black

Roller Latch and Mount

DOOR HARDWARE

DIRTT NON-LOCKING OPTIONS

Bar Pull

See DIRT T Pull Specifications

See DIRT T Standard Pull Height, for above finished floor (AFF) locations

DIRTT LOCKING OPTIONS

Top-locking Pull

CUSTOMER'S OWN MATERIAL (COM)

Approved Custom Hardware (Supplied "By Others")

WALL CONNECTION COMPONENTS

Base Building Connection

Wall Start with Wall Start Leveler Assembly

DIMENSIONS AND DETAILS

ALUMINUM EXTRUSIONS

Header Rail

Minimum (Min.) Length 3" (76mm)

Maximum (Max.) Length 120" (3.05m)*

Width 1 ½" (38mm)

Height 2" (51mm)

Base Rail with Cover

Min. Length 15 ½" (394mm)

Max. Length 120" (3.05m)*

Width 1 ½" (38mm)

Height 1 ¾" (44mm)

Refer to the [Reflect Wall Tech Sheet](#) for further information.

*NOTE: Multiple rails can be cinched together for longer lengths.

FRAMED OPENING

Pivot and Strike Verticals (jamb on pivot and strike side)

Width 1 ¾" (44mm)

Height Oversized in height; cut down on-site to suit opening

Standard Height 96" (2.44m)

Max. Height 120" (3.05m)

Depth 1" (25mm)

PVC EXTRUSIONS

FRAMELESS OPENING

PVC Pivot Door Stop (jamb on pivot and strike side)

Width ⅝" (16mm)

Height Oversized in height; cut down on-site to suit opening

Depth ½" (12mm)

DOOR GLASS

Standard Door Glass Thickness ½" (12mm)

Height Door height as required to meet performance specifications

Opening Range 155°

(continued on next page)

TECH SHEET

FRAMED OPENING

NOTE: Door glass is 1 $\frac{5}{8}$ " (41mm) smaller than frame width.

Standard/Max. Frame Width	40" (1.02m)
Min. Width	36" (914mm)
Standard Door Glass Width	38 $\frac{3}{8}$ " (975mm)
Standard Clear Opening Width	35 $\frac{11}{16}$ " (906mm)
Double Door Frame Width	78 $\frac{5}{8}$ " (2.00m)
Double Door Clear Opening	
1 door open	35 $\frac{9}{16}$ " (904mm)
2 doors open	70 $\frac{15}{16}$ " (1.80m)

FRAMELESS OPENING

NOTE: Door glass is $\frac{5}{8}$ " smaller than frame width.

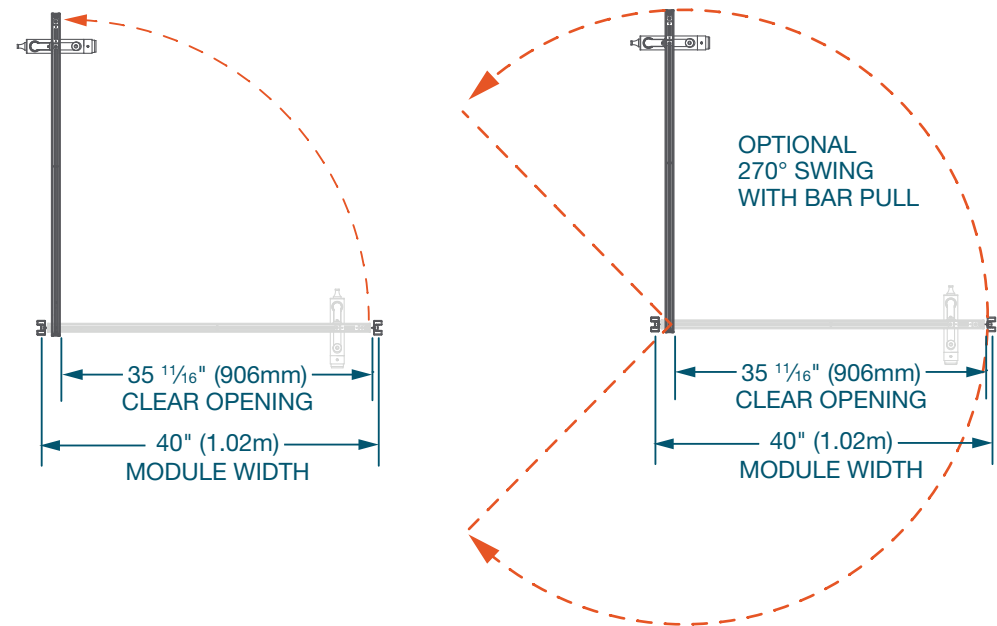
Standard/Max. Frame Width	40" (1.02m)
Min. Width	36" (914mm)
Standard Door Glass Width	39 $\frac{3}{8}$ " (1.00m)
Standard Clear Frameless Opening Width	36 $\frac{3}{8}$ " (930mm)
Double Door Frame Width	79 $\frac{3}{8}$ " (2.02m)
Double Door Clear Opening	
1 door open	36 $\frac{9}{16}$ " (930mm)
2 doors open	72 $\frac{15}{16}$ " (1.85m)

DOOR TOP AND BOTTOM MINI-RAIL

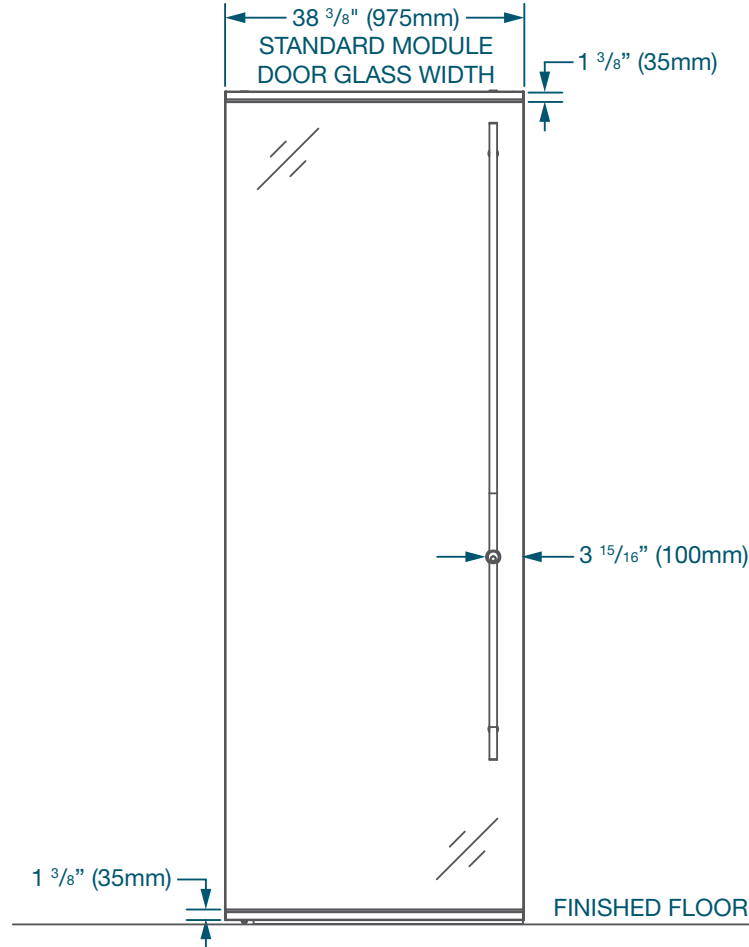
Length	Same length as door (end cap to end cap)
Width	1 $\frac{1}{16}$ " (27mm)
Height	1 $\frac{3}{8}$ " (35mm)

NOTE: DIRT™ has designed the standard door sizes to have a consistent frame module width between styles and also consider the minimum clear opening width of 32" (813mm) as required by section 1010 for means of egress doors per the International Building Code (IBC - 2018 version). It is understood that different clear opening widths may be required due to location, specific application, or due to other building code(s) requirements. Door and frame widths can be customized to suit most opening width requirements; however, modification to door size must be reviewed by the Professional of Record for each project to ensure the requirements of applicable building code have been met. DIRT™ doors have a maximum allowable weight of 200lbs unless stated otherwise.

CLEARANCE - SINGLE DOOR WITH FRAMED OPENING







PLAN VIEW/ELEVATION
[Not To Scale (NTS)]



PULL

NOTE: All Pulls have a Stainless Steel (630) finish.

IMAGE	NAME	DOOR STYLE	DOOR TYPE	DETAILS
	12" BRUSHED STAINLESS	Barn, Pivot, Butt Hinge	Aluminum (Slim, Goldie, Phat), SCW	1" (25mm) Diameter, 12" (305mm) High Back to Back D Pull
	12" TO 6" CENTRE TO CENTRE (C TO C)	Barn, Pivot, Butt Hinge	Aluminum (Slim, Goldie, Phat), SCW	1" (25mm) Diameter, 12" (305mm) High Back to Back Bar Pull
	30" TO 24" C TO C	Barn, Pivot, Butt Hinge	Aluminum (Slim, Goldie, Phat), SCW	1" (25mm) Diameter, 30" (762mm) High Back to Back Bar Pull
	72" TO 56" C TO C	Barn, Pivot, Butt Hinge	Aluminum (Slim, Goldie, Phat), SCW	1" (25mm) Diameter, 72" (1.83m) High Back to Back Bar Pull

MTREFLECT™



DIRTT

PERFORMANCE IN SYNC WITH YOUR DESIGN

Made to harmonize with your space and aesthetic, DIRT™ delivers its slimmest line yet. The best of manufactured construction together with the aesthetic of clean lines and a reliable fit. It's a minimalist profile that reflects your vision.



- ① Base height of only 1 $\frac{3}{4}$ " (44 mm)
- ② Frameless glass barn doors with hidden hardware track
- ③ More than 60% thinner than DIRT's standard glass walls
- ④ Innovative levelling system ($\frac{1}{2}$ " variance) works in more places with uneven floors
- ⑤ Slim profile ceiling connections
- ⑥ Transparent polycarbonate glass connections reduce the number of vertical supports
- ⑦ Efficient manufacturing to keep your project on schedule

BUILT WITH THE SPEED AND PRECISION YOU EXPECT FROM DIRT

Reflect walls are designed and built within the DIRT ecosystem, backed by 15 years of excellence in manufactured construction. Your vision is integrated in DIRT's proprietary software, manufactured and pre-cut before arriving on-site. Expect precision manufacturing, completed efficiently. And with a solution driven by technology, there are no surprise price changes.

IN HARMONY WITH THE BASE BUILDING

Walls in the Reflect line are assembled on-site where they're independently levelled to the exact tolerances of your building. The levelling capability ensures each pane of glass can be adjusted within ½" (13 mm) of variance. Uneven floors and a slim-line wall solution can be together at last.





BUILT IN BALANCE WITH SUSTAINABILITY STANDARD

As part of the DIRT™ ecosystem, Reflect is designed in proprietary software that feeds into precise manufacturing. The process means glass can be sourced locally without the risk of incompatibility, reducing shipping costs and environmental impacts. Further, aluminum used in all DIRT™ solutions contains 50-60% recycled content. Your DIRT™ team can work with you to evaluate applicable green building credits.



Reflect your vision at
dirtt.com/reflect

DIRTT