

TCEC Cooling Tower Basin Sealing RFP
Pre-Bid Site Walkdown 9/30/25

- **Question: Are the dimensions on the drawing handed out accurate?**
 - Response: Not necessarily. It is up to you as the vendor during this walk down to validate the dimensions. *For example, the caulking on the drawing calls out 1" width, but in the field the caulking appears to be at least 2" in width.*

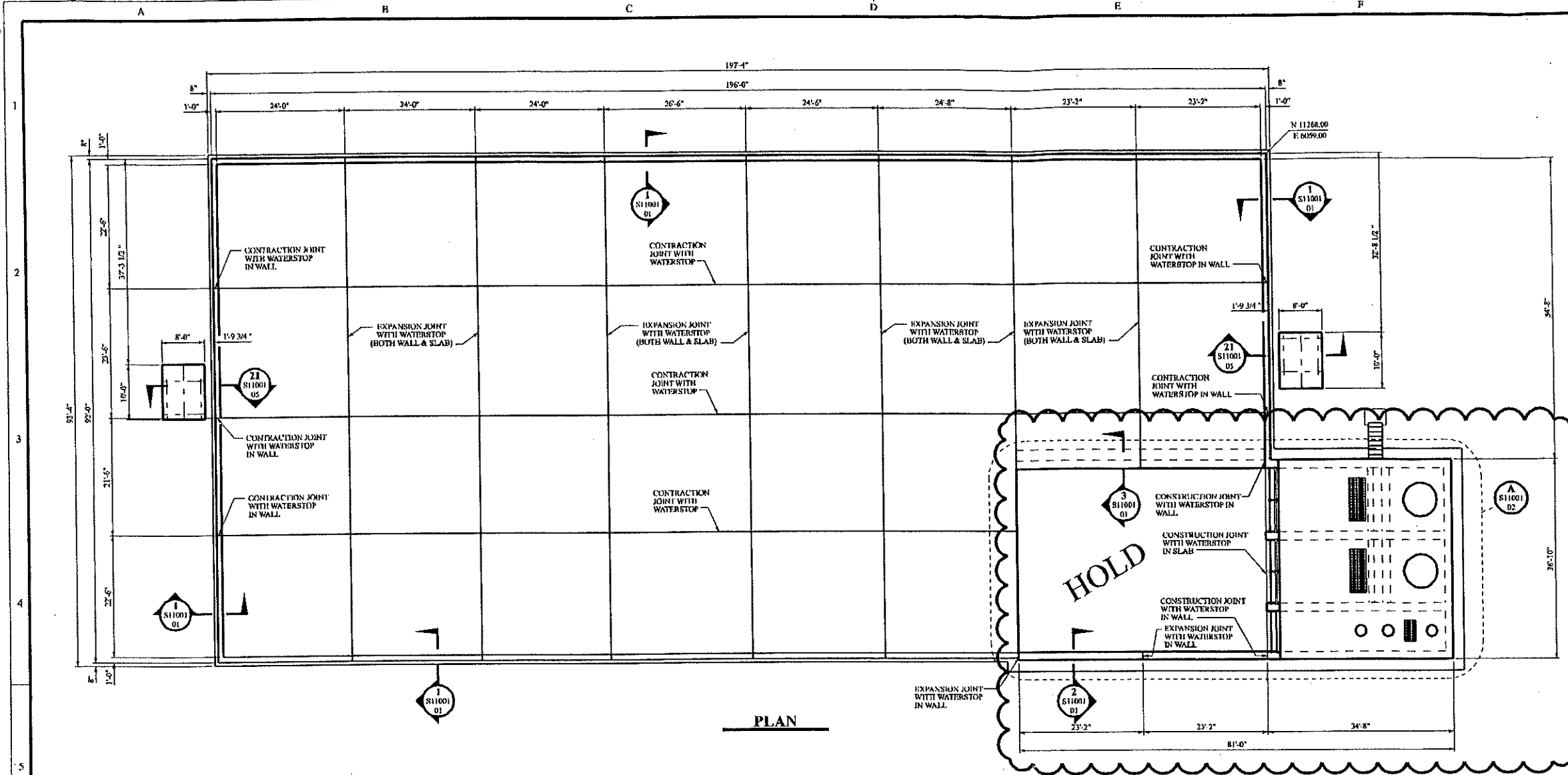
- **Question: How much above the surface(s) does the caulking need to be, i.e., 1/8", 1/4"?**
 - Response: That is to be determined by the vendor.

- **Question: Does the job scope include the seals/joints on the basin walls and do we need to excavate to get to the portion below grade?**
 - Response: Yes, ALL basin walls are considered a part of the basin and are part of the scope and vendors are responsible for own excavation on the perimeter walls.

- **Question: Does the job scope include the sealing around the inlet screens in the deep well?**
 - Response: Yes and we will remove the inlet screens for access.

- **Question: Does cleanup include FRP panels and/or structure?**
 - Response: No.

- **Question: Are cracks and/or spaling on the basin walls considered a part of this scope?**
 - Response: Yes.



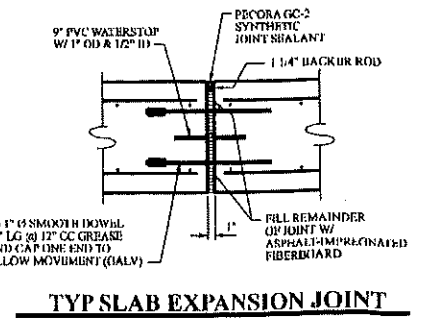
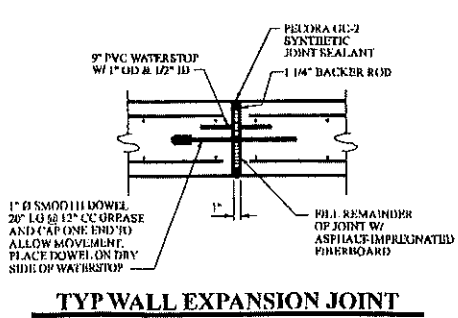
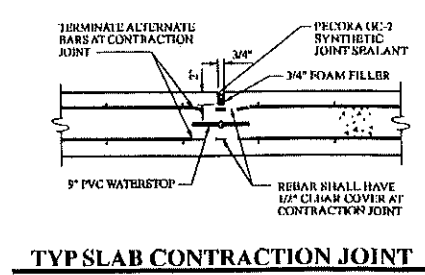
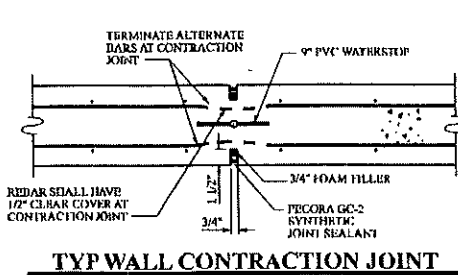
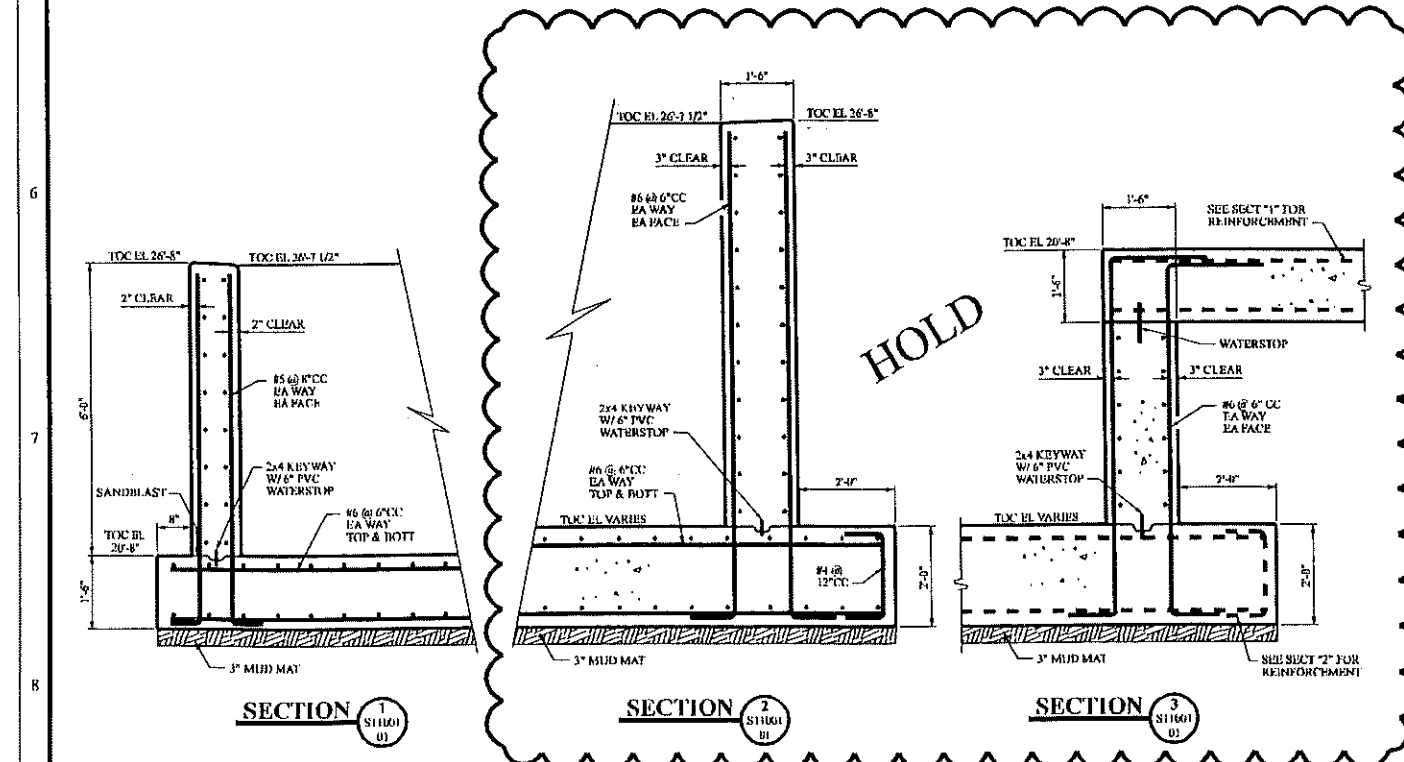
GENERAL NOTES

1. FOR GENERAL CONSTRUCTION NOTES, SEE REF DWG #1.

REFERENCE DRAWINGS

1. SITE RELATED WORK - GENERAL CONSTRUCTION NOTES (M012525-STWS0001 SH01)
2. SITE RELATED WORK - GENERAL STEEL DETAILS (M012525-STWS20001 SH01)
3. SITE RELATED WORK - GENERAL CONCRETE DETAILS (M012525-STWS10001 SH01)
4. COOLING TOWER PUMP PIT - SECTIONS & DETAILS (M012525-HRCS11001 SH02)
5. COOLING TOWER PUMP PIT - SECTIONS & DETAILS (M012525-HRCS11001 SH03)
6. COOLING TOWER STIFFENS - SECTIONS & DETAILS (M012525-HRCS11001 SH04)
7. COOLING TOWER - SECTIONS & DETAILS (M012525-HRCS11001 SH05)
8. COOLING TOWER - 3 TON TROLLEY CRANE PLAN, SECTIONS & DETAILS (M012525-HRCS11001 SH06)
9. GEA - GENERAL ARRANGEMENT (M012525-HRC0001 RA)
10. GEA - BASIN & ANCHOR BOLT ARRANGEMENT (M012525-HRC0001 RA)
11. GEA - MAXIMUM LOADS (M012525-HRC0001 RA)

PRELIMINARY
AS OF 6/2/2006
NOT FOR CONSTRUCTION



TREASURE COAST ENERGY CENTER, PB1
CIRCULATING WATER
COOLING TOWER BASIN
PLAN, SECTIONS & DETAILS

PROJECT NO. **D012525-HRCS11001** 01 A